



Deerings Road, Reigate

£2,500 Per Month





Ralph James offers an three-bedroom detached Victorian rental in Reigate. This charming property is located in a peaceful residential street near the town center and train station, blending modern updates with its enduring Victorian character. It includes a bay-fronted lounge, open-plan kitchen/diner, and a delightful conservatory overlooking the garden.



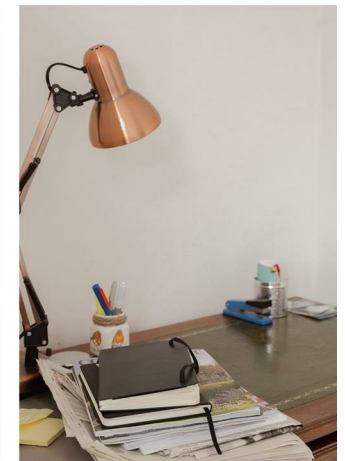


Ralph James is proud to present to the Reigate lettings market, this three-bedroom detached Victorian house on Deerings Lane. Nestled within a popular residential road, it offers easy accessibility to both the town center and the train station. This property enjoys a coveted location within Reigate, masterfully blending modernity with the enduring charm of its Victorian heritage.

The interior boasts an inviting entrance hall adorned with original wood flooring. To the front, a bay-fronted lounge harmoniously connects with a dining room, while to the rear, an open-plan kitchen/diner showcases an array of appliances and a captivating feature fireplace. Overlooking the garden and patio area, a delightful conservatory adds to the appeal.

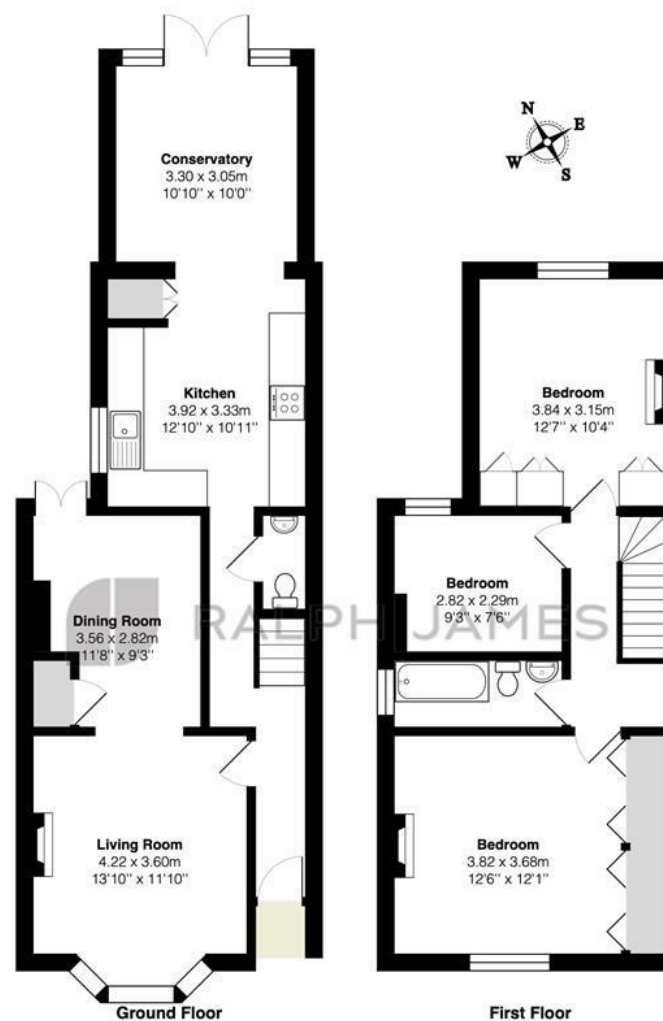
Upstairs, you'll find the principal bedroom complete with built-in wardrobes and another charming fireplace. A contemporary family bathroom awaits, complete with a luxurious roll-top bath. Additionally, there's a second double bedroom and a third bedroom, offering versatility.

Completing the package, the property provides off-road parking for your convenience. Don't miss the opportunity to make this captivating Victorian gem your home in Reigate.



Need to know

- Three-bedroom detached Victorian house in Reigate.
- Located on a peaceful residential street with easy access to the town center and train station.
- A seamless blend of modern updates and enduring Victorian character.
- Welcoming entrance hall with original wood flooring.
- Bay-fronted lounge connected to a dining room.
- Open-plan kitchen/diner with feature fireplace.
- Charming conservatory with garden and patio views
- Master bedroom with built-in wardrobes, modern family bathroom, second double bedroom, and a third bedroom. Off-road parking available.
- EPC: E
- Council: E



Interested?

reigate@ralphjames.co.uk
01737 333677

1

ralphjames.co.uk

Deerings Road, Reigate

Total Area: 106.9 m² ... 1150 ft²

FOR ILLUSTRATIVE PURPOSES ONLY.

Whilst every attempt has been made to ensure the accuracy of the floor plan shown, all measurements, positioning, fixtures, features, fittings and any other data shown are an approximate interpretation for illustrative purposes only and are not to scale.

No responsibility is taken for any error, omission, miss-statement or use of data shown.

The above statement applies to both 'Still Moving London LTD' and the Company or individual displaying this floor plan.

Unauthorised reproduction prohibited.

Â© Still Moving London LTD (www.stillmoving.london)

RALPH JAMES